

Algo Paging Adapter

After unboxing and reading the instruction manual, plug the device into a PoE port and wait for the tone to indicate the device is up and ready.

Press the menu button until you hear the selection for device information and then press select.

The Algo will now read back the IP address it has received from the network

Record this address. This will tell you if you have the PoE port programmed for the correct VLAN or not based on the recorded IP address information.

Open a browser and enter that IP address.

The screenshot shows the web interface for the Algo 8180 SIP Audio Alerter. The header includes the 'ALGO' logo, the title '8180 SIP Audio Alerter Control Panel', and the firmware version 'Firmware: 1.5 Kernel: r2'. A 'Status' tab is visible. The main content area is titled 'Welcome to the SIP Audio Alerter Control Panel' and contains four steps for configuration: Step 1 (Configure your SIP Audio Alerter), Step 2 (Check network settings), Step 3 (Secure your SIP Audio Alerter), and Step 4 (Register your SIP Audio Alerter). Below the steps is a 'Login' section with a password field and a 'Login' button. An 'Info' section displays device details such as Device Name, Ring Extension, Page Extension, SIP Registration status, and Call Status, along with MAC, IP, and Netmask addresses. The footer contains the copyright notice: '© Copyright 2008-2011 Algo Communication Products Ltd.'

Enter 'algo' as the default password and press enter.

At the main screen you will see this page. Expand SIP Domain/Proxy

Enter your primary CIC server or SIP Proxy Server address.

Enter an extension for the Ring Detection Extension

In this Example 801 was used for the Extension, Authentication ID, and the Password is 1234.

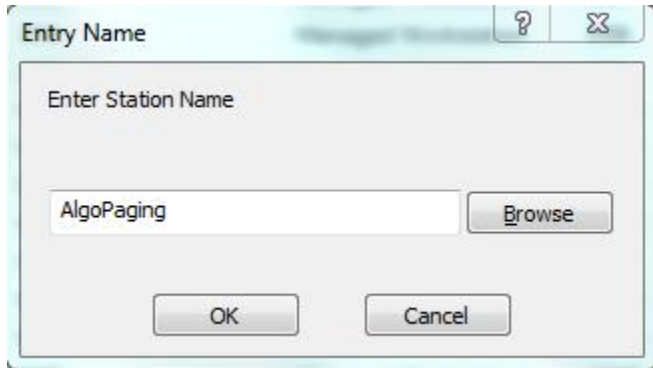
Enter an extension for the Page Audio

In this Example 802 was used for the Extension, Authentication ID, and the Password is 1234.

<input type="checkbox"/> SIP Domain/Proxy	<input type="text" value="172.16.8.2"/>	<input type="checkbox"/> Ring Detect Extension	<input type="text" value="801"/>
Outbound Proxy	<input type="text"/>	Auth ID	<input type="text" value="801"/>
STUN Server	<input type="text"/>	Password	<input type="password" value="•••••"/>
Registrar	<input type="text"/>	<input type="checkbox"/> Page Audio Extension	<input type="text" value="802"/>
Register Period (seconds)	<input type="text" value="3600"/>	Auth ID	<input type="text" value="802"/>
Different Ports for Extensions	<input type="radio"/> On <input checked="" type="radio"/> Off	Password	<input type="password" value="•••••"/>
Keep-alive Method	<input type="radio"/> None <input checked="" type="radio"/> Double CRLF		
Keep-alive Period (seconds)	<input type="text" value="30"/>		

Open Interaction Administrator and click on the Stations Container.

Click in the right-hand pane and press insert and enter the name for the paging station and click ok.



Select Stand Alone Fax from the top list and then use the drop down below to select the Stand Alone Fax Machine SIP and click next.

Station Type

Station Type:

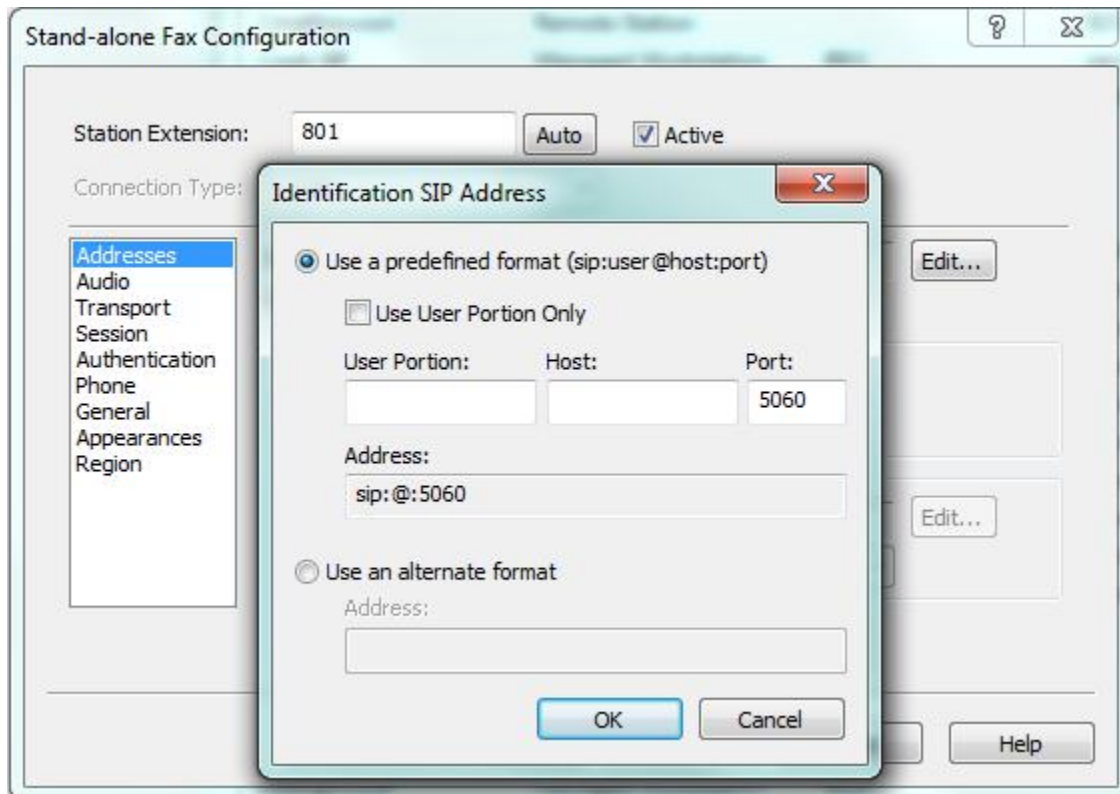
Stand-alone Fax

Select the station template that will be used for the new station. This can be left blank, if you wish to create a new station from scratch.

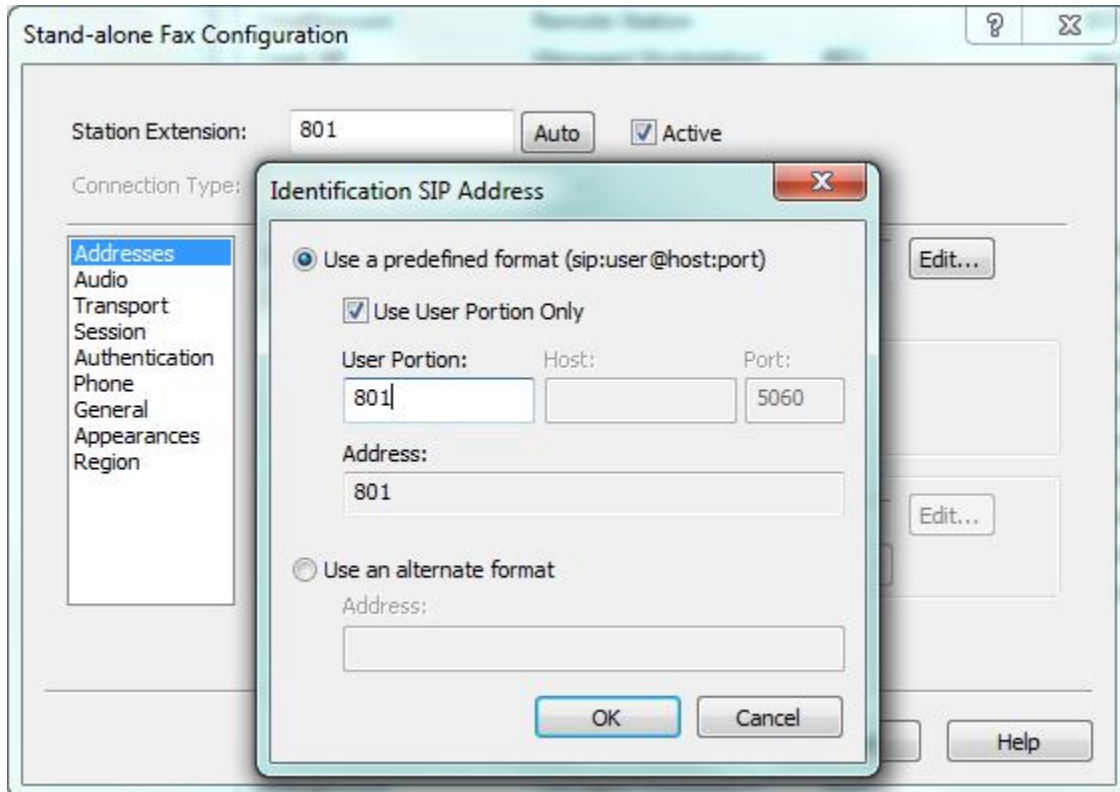
Station Template: Permanent Station Template for Stand-alone Fax Machine, SIP.

< Back Next > Finish Cancel Help

Enter 801 for the station extension and then click the ellipsis to the right of Identification Address.

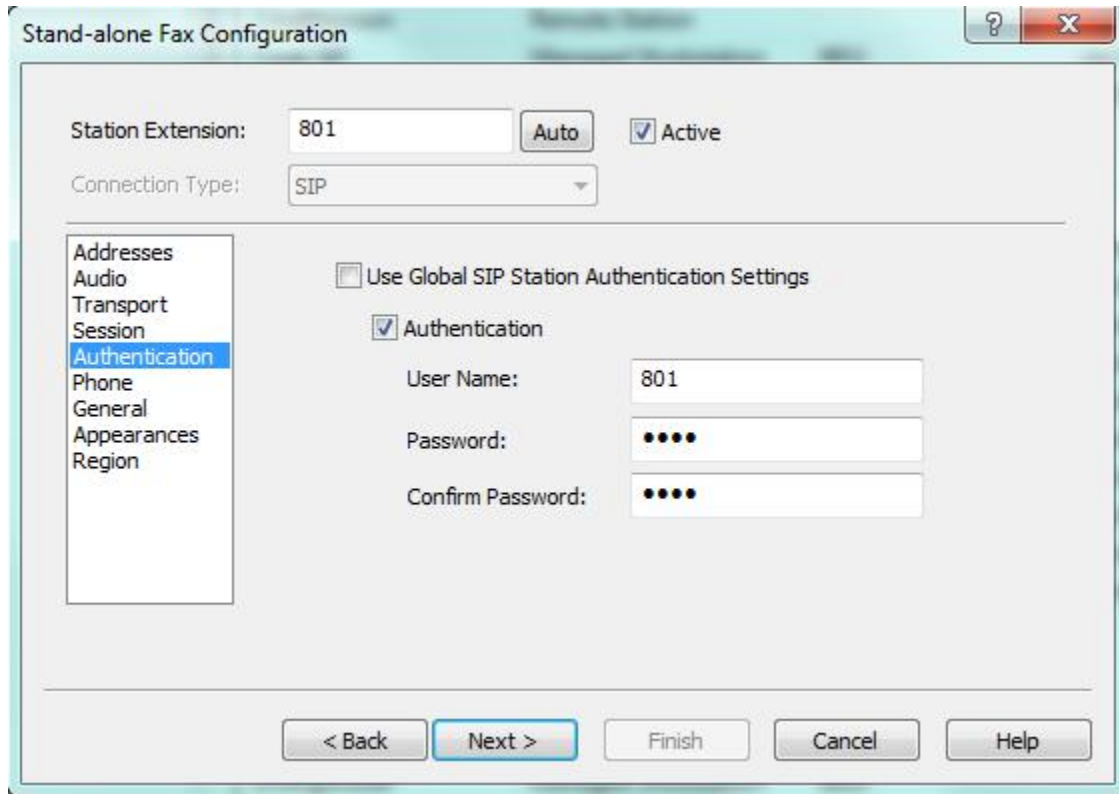


Click the Check to Use User Portion Only, enter 801 in the User Portion field, and click OK.



Click on Authentication in the left hand pane, click the check in the right hand pane, and enter the following information.

User Name 801 and Password 1234 and then click next.



The screenshot shows a window titled "Stand-alone Fax Configuration". On the left is a vertical menu with the following items: Addresses, Audio, Transport, Session, Authentication (highlighted in blue), Phone, General, Appearances, and Region. The main area contains the following settings:

- Station Extension: 801 (with an "Auto" button) and Active
- Connection Type: SIP (dropdown menu)
- Use Global SIP Station Authentication Settings
- Authentication
 - User Name: 801
 - Password: ●●●●
 - Confirm Password: ●●●●

At the bottom are five buttons: "< Back", "Next >" (highlighted in blue), "Finish", "Cancel", and "Help".

Ensure a basic station license is selected and enabled then click next.

Give the station access to intercom and SIP only and then click finish.

